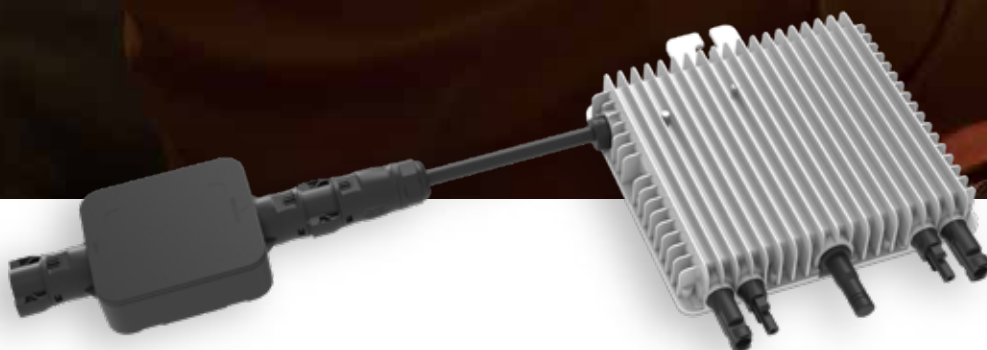


Micro Inverter (Integrated NS Protection Device)

SUN-M60/80/100G3-EU-Q0



IP67 protection degree, 15 years warranty



2 MPP trackers, module level monitoring



WIFI communication



Rapid shutdown function

Deye

Stock Code: 605117.SH

Micro Inverter (Integrated NS Protection Device)	SUN-M60G3-EU-Q0	SUN-M80G3-EU-Q0	SUN-M100G3-EU-Q0
Input Data (DC)			
Recommended Input Power (STC)	210-420W (2 Piece)	210-600W (2 Piece)	210-700W (2 Piece)
Maximum Input DC Voltage (V)	60		
MPPT Voltage Range (V)	25-55		
Full Load DC Voltage Range (V)	30-55	33-55	40-55
Max. DC Short Circuit Current (A)	2x19.5		
Max. Input Current (A)	2x13		
No.of MPP Trackers	2		
No.of Strings per MPP Tracker	1		
Output Data (AC)			
Max. Output Apparent Power (VA)	600	800	1000
Rated Output Power (W)	600	800	1000
Rated Output Current (A)	2.8/2.7	3.7/3.5	4.6/4.4
Max.AC Output Current (A)	2.8/2.7	3.7/3.5	4.6/4.4
Grid Connection Form	L+N+PE 220V/184V-242V 230V/ 195.5V-253V		
Rated output voltage/range (V)			
Rated Grid Frequency/range (Hz)	50Hz/45Hz-55Hz 60Hz/55Hz-65Hz		
Power Factor Adjustment Range	>0.99		
Total Harmonics Current Distortion (THDi)	<3%		
DC Component Of Grid	<0.5%In		
Maximum Units per Branch	8	6	5
Efficiency			
Max Efficiency	96.5%		
MPPT Efficiency	>99%		
Mechanical Data			
Night Time Power Consumption	50mW		
Ambient Temperature Range	-40-65°C, >45°C Derating		
Cabinet Size (WxHxD mm)	190×212×40 (Excluding Connectors and Brackets)		
Weight (kg)	2.8		
Cooling	Free Cooling		
Enclosure Environmental Rating	IP67		
Features			
Communication	WIFI		
Grid Connection Standard	IEC 61727, IEC 62116, CEI 0-21, EN 50549, NRS 097, RD 140, UNE 217002, OVE-Richtlinie R25, G98, VDE-AR-N 4105		
Safety EMC / Standard	IEC/EN 61000-6-1/2/3/4, IEC/EN 62109-1, IEC/EN 62109-2		
Warranty	15 Years		
Network and System Protection Device	SUN-MI-RELAY-01		
AC Input Data (Inverter)			
Nominal Voltage	220V/230V		
Nominal Frequency	50Hz		
Max AC Current	12A		
Nominal AC Current	12A		
Matching Inverter	MicroInverter		
AC Output Data(Grid)			
Nominal Voltage	220V/230V		
Nominal Frequency	50Hz		
Max AC Current	12A		
Nominal AC Current	12A		
General Data			
Ambient Temperature Range	-40-65°C		
Humidity	0%-100% RH		
Cabinet Size (WxHxD mm)	111×95×37.7 (Excluding Connectors and Brackets)		
Weight (kg)	0.34		
Enclosure Environmental Rating	IP67		
Communication	Wireless/WIFI		
Safety EMC / Standard	IEC/EN 61000-6-1/2/3/4, IEC/EN 62109-1, IEC/EN 62109-2, VDE-AR-N 4105		
Warranty	15 Years		